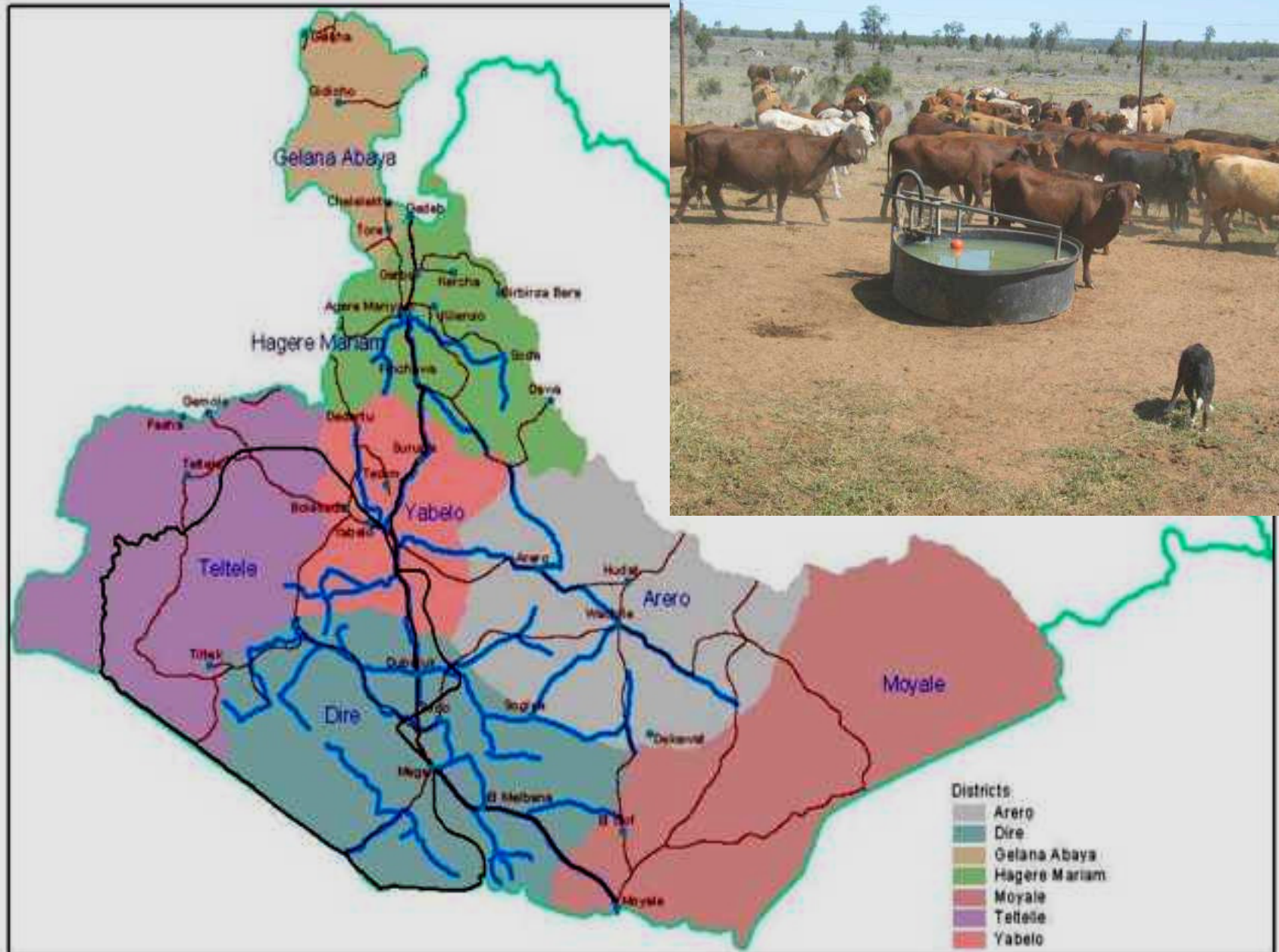


Growth Corridor Approach

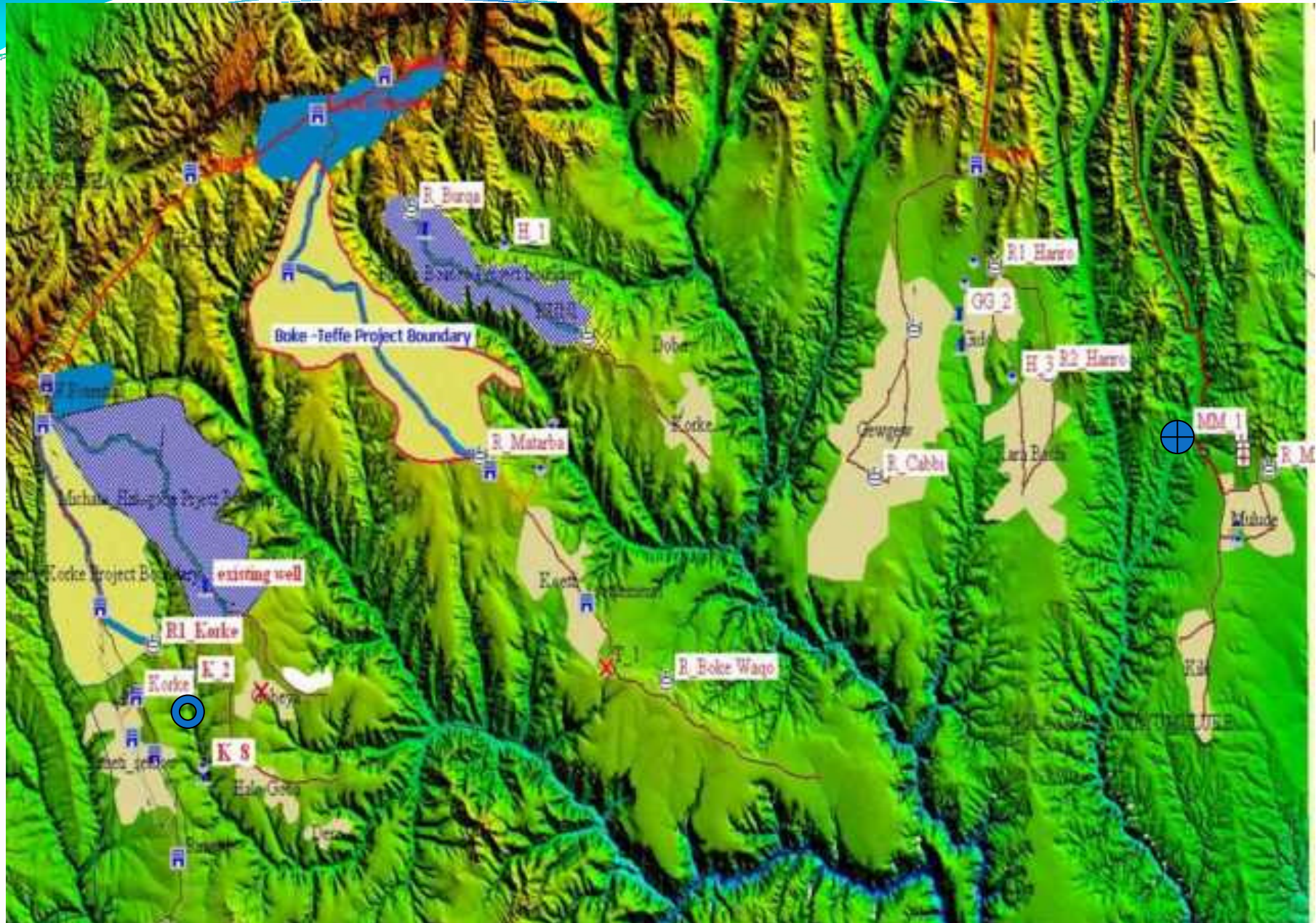
State Minister for Basin Development, Ethiopia – Ato Shiferaw



water supply distribution system



Hararge

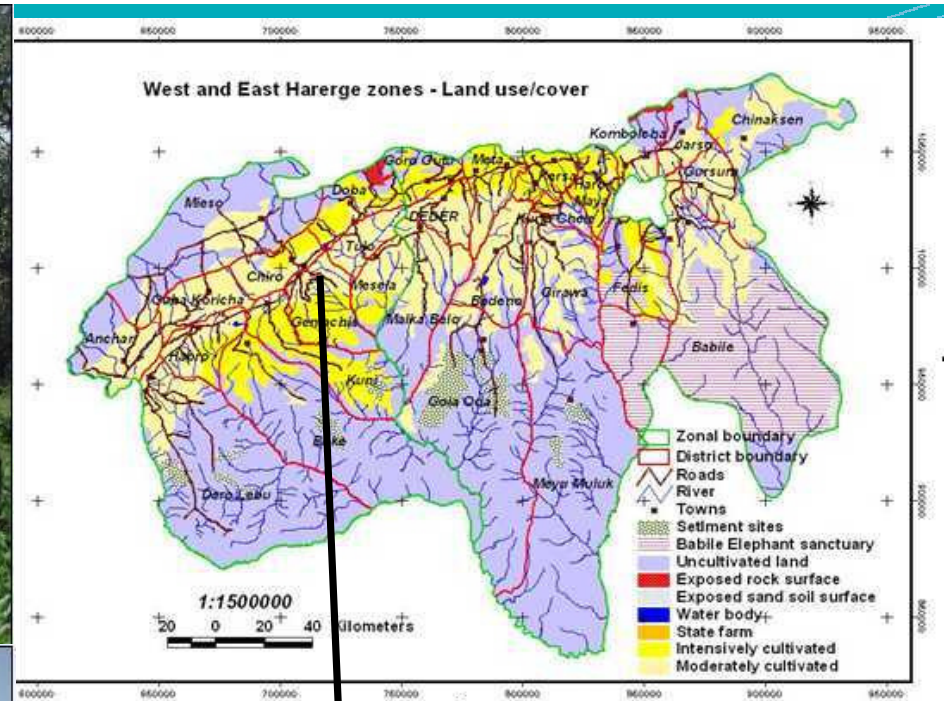


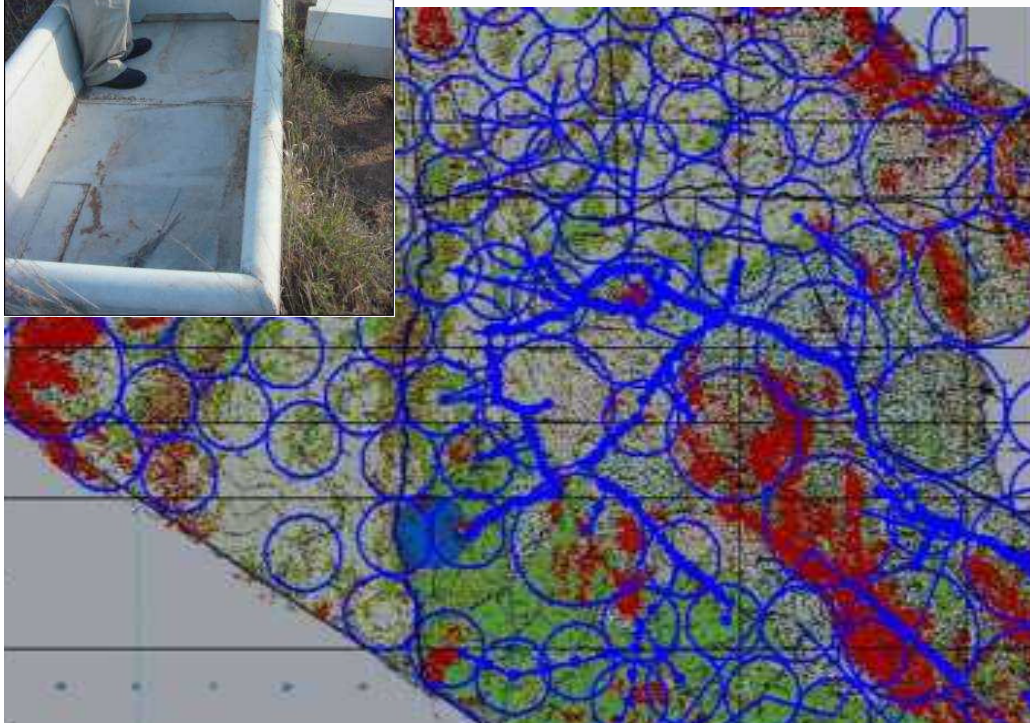


The valley bottom



The plains

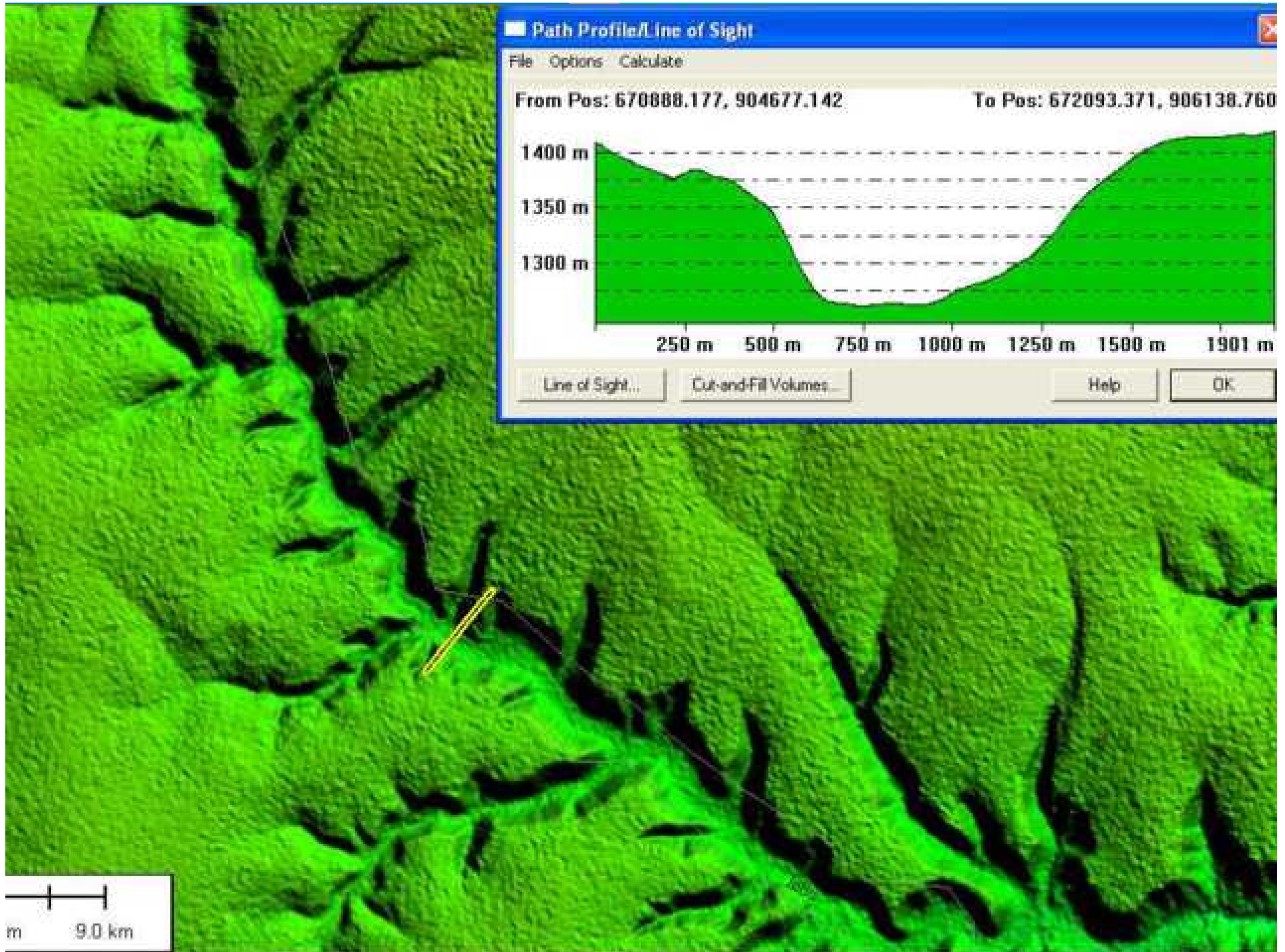




Service Standards for design

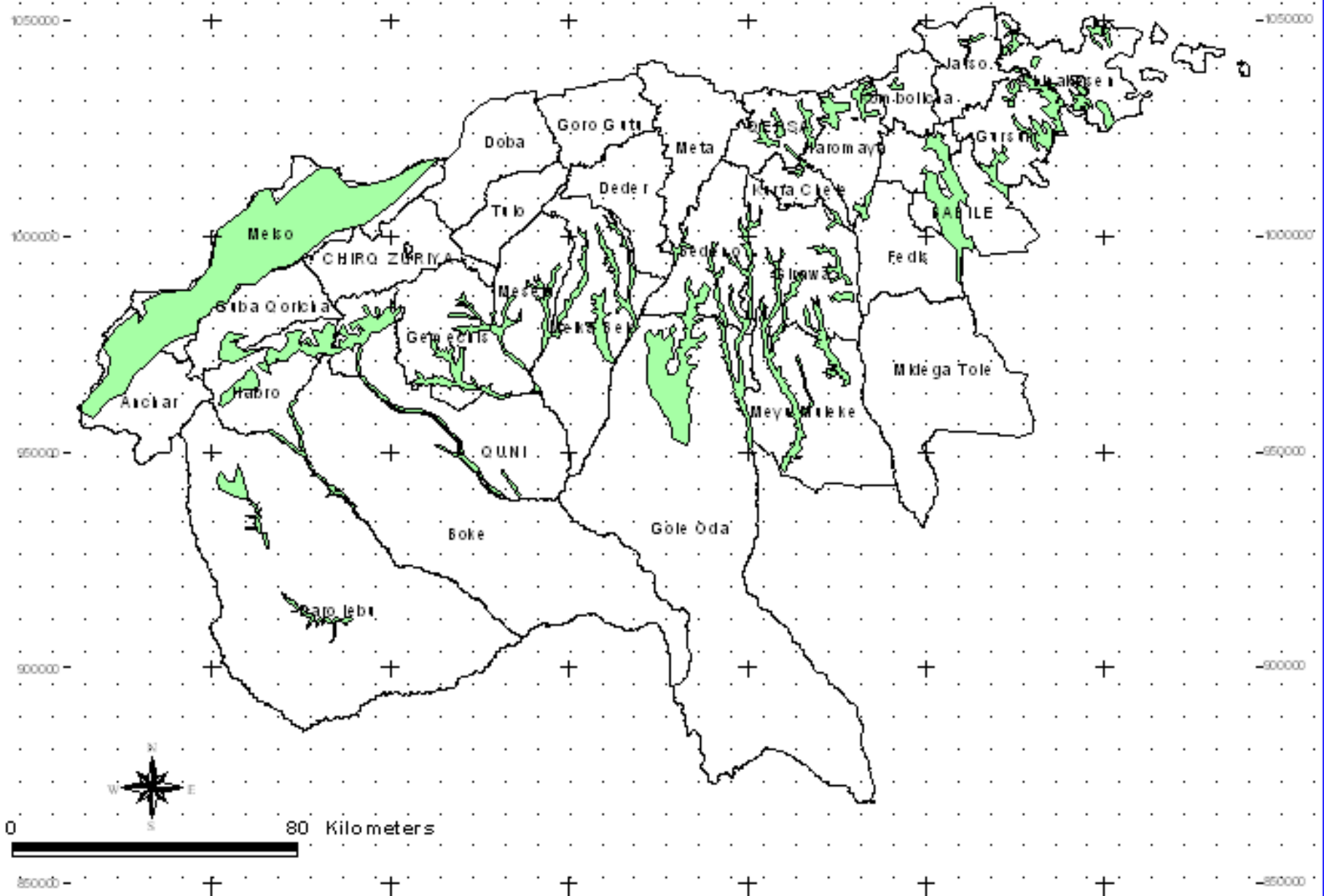
Rangeland	
Cattle (with sheep)	4 hectares for a cow
Camel (with goat)	6 hectares for a camel
Water point distance	
Cattle	5 km radius
Camel	7.5 km radius
Water Requirement	
Cow	15 l/c/d
Camel	20 l/c/d
Wild life	12 l/c/d
Watering time	12 hrs
Elementary School	3 km radius
Health post	Every Kebel
Vet clinic	
- Camel/Goat	10 km radius
- Cattle/sheep	7.5 km radius



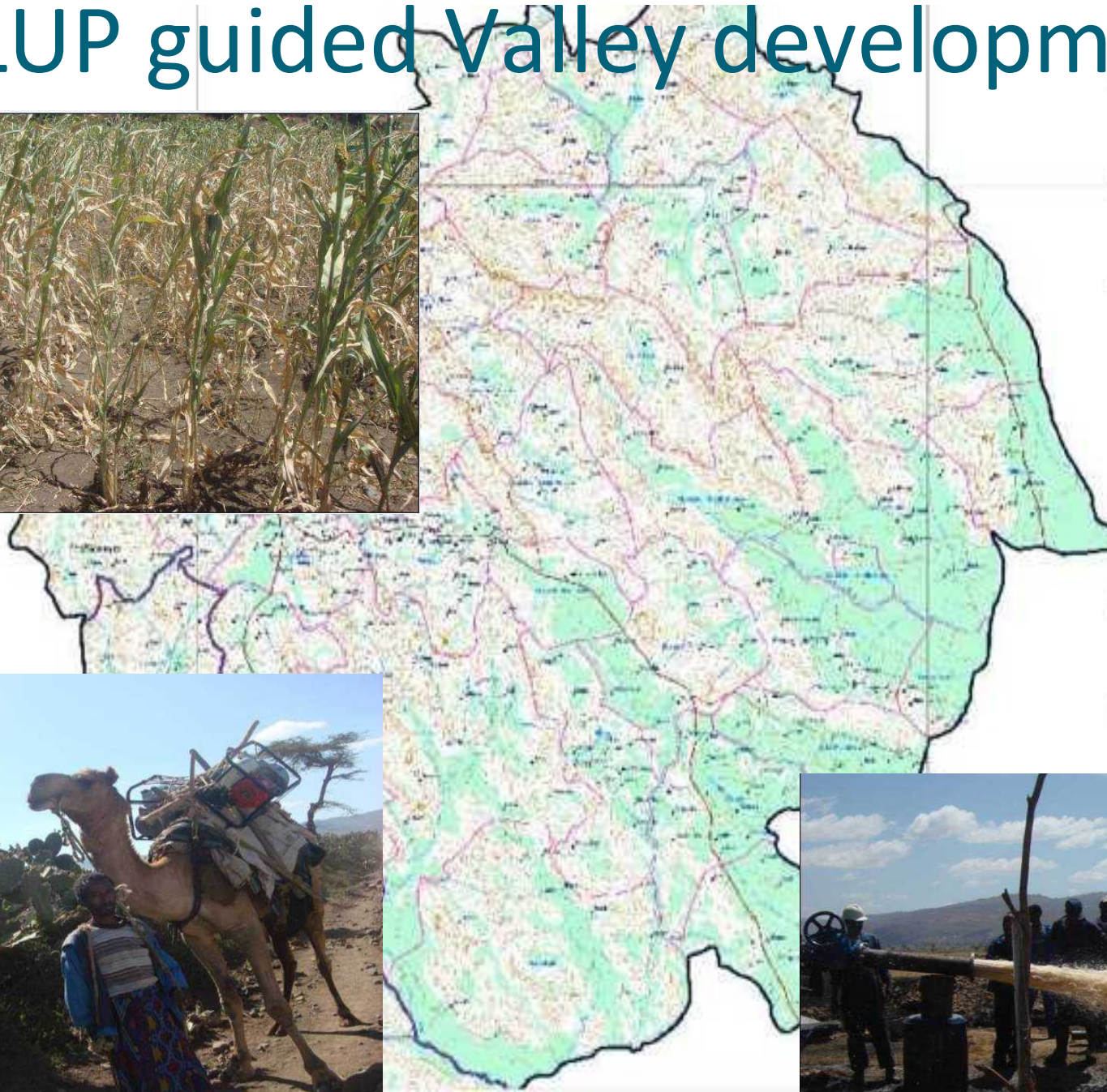


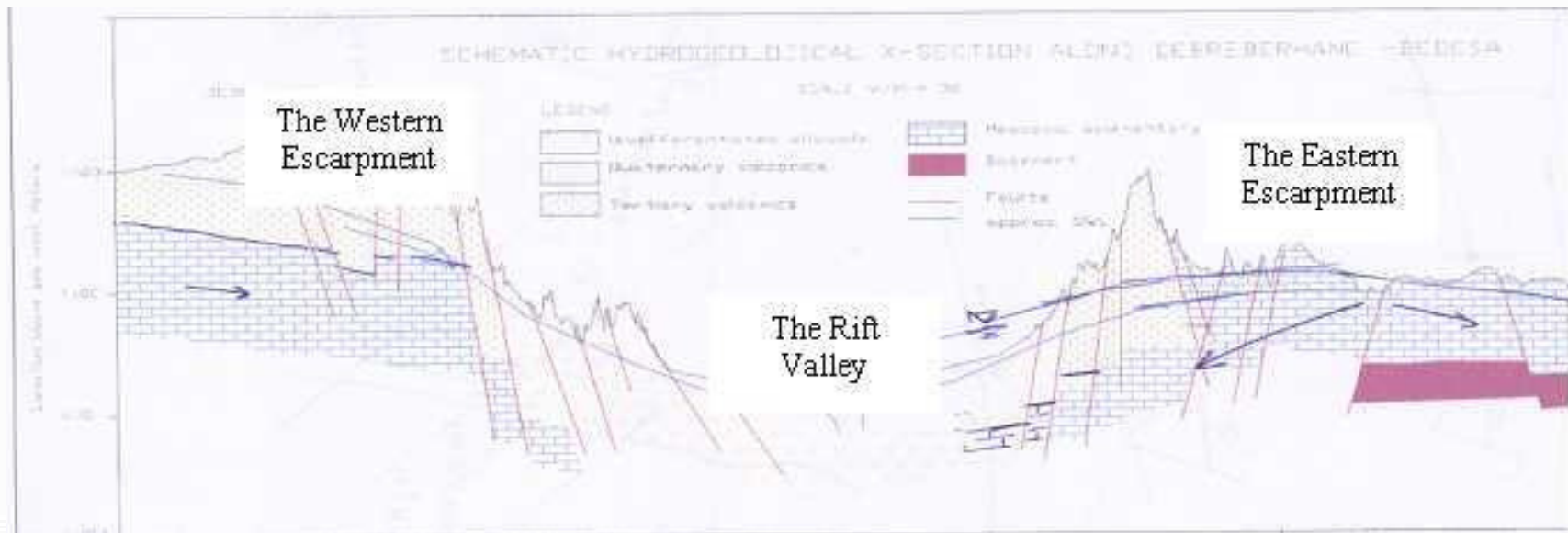
TOP 1000 blind valley development

Fig. Major Potential areas for Valley Development



LUP guided Valley development





The Valleys in West Oromia



Hilly and undulating
landscape

